

# TEXAS TIMBER PRICE TRENDS

## Market Overview\*

Given the strengthening labor market and overall economy, the Federal Open Market Committee decided to raise the target range for the federal funds rate to 0.75 -1.0%. This was the second 0.25% rate hike in the last three months. The U.S. housing market continued to move upward in early 2017. Privately-owned housing starts in February were at a seasonally adjusted annual rate of about 1.3 million units, up 4.4% from February 2016. Stumpage prices in Texas, however, dropped across the board during this period.

Statewide pine sawlog prices averaged \$23.66 per ton, down 8% from last period and down 21% from the price a year ago. Average pine sawlog price was \$21.88 per ton in Northeast Texas and \$24.62 per ton in Southeast Texas.

The statewide average pine pulpwood price was \$8.19 per ton. This was down 8% from last period and down 5% from the price a year ago. In Northeast Texas, the average pine pulpwood price was \$7.74 per ton. It was \$8.26 per ton in Southeast Texas.

Small diameter pine sawlogs (CNS) averaged \$11.77 per ton statewide, down 10% from last period. It was down 20% from the price a year ago.

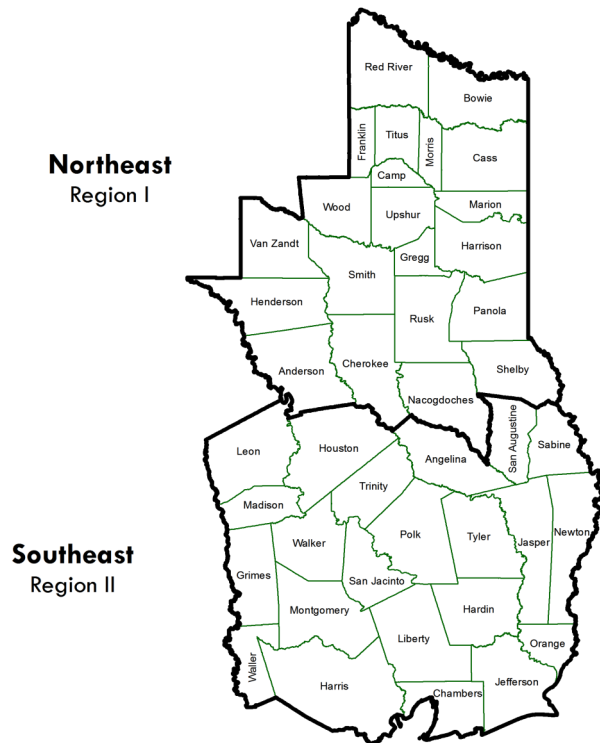
The statewide average mixed hardwood sawlog price was \$31.69 per ton, down 23% from last period and down 23% from the price a

year ago.

The statewide average hardwood pulpwood price was \$8.88 per ton, down 15% from last period. It was down 24% from the price a year ago.

\*The average prices reported here represent statewide volumes of 77,931 tons of pine sawlogs, 181,505 tons of pine pulpwood, 516 tons of pine CNS, 2,692 tons of mixed hardwood sawlogs, and 15,211 tons of hardwood pulpwood during January/February 2017.

## Texas Timber Price Trends Market Regions

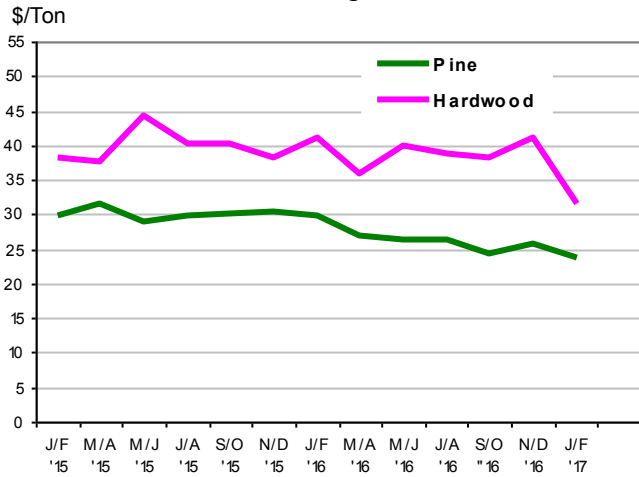


## Stumpage Prices in Texas

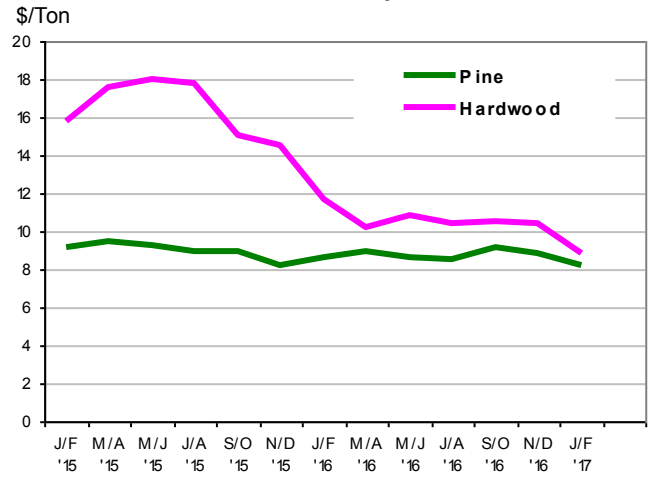
Product /Region	Average Price		Last Period			Year Ago			Report
<b>PINE</b>									
<b>Sawlogs</b>	<b>\$/Ton</b>	<b>\$/MBF</b>	<b>\$/Ton</b>	<b>\$/MBF</b>	<b>Chg</b>	<b>\$/Ton</b>	<b>\$/MBF</b>	<b>Chg</b>	<b>Number</b>
Northeast TX	\$21.88	\$175.02	\$24.54	\$188.81	-11% ↓	\$29.05	\$232.38	-25% ↓	38
Southeast TX	\$24.62	\$182.71	\$27.99	\$223.96	-12% ↓	\$30.02	\$236.86	-18% ↓	14
Statewide	\$23.66	\$180.14	\$25.73	\$200.61	-8% ↓	\$29.87	\$236.19	-21% ↓	52
USFS	**	**	**	**	**	**	**	**	**
<b>Pulpwood</b>	<b>\$/Ton</b>	<b>\$/Cord</b>	<b>\$/Ton</b>	<b>\$/Cord</b>	<b>Chg</b>	<b>\$/Ton</b>	<b>\$/Cord</b>	<b>Chg</b>	<b>Number</b>
Northeast TX	\$7.74	\$20.23	\$8.44	\$22.39	-8% ↓	\$8.88	\$23.81	-13% ↓	17
Southeast TX	\$8.26	\$22.30	\$9.00	\$24.29	-8% ↓	\$8.58	\$23.16	-4% ↓	28
Statewide	\$8.19	\$22.02	\$8.87	\$23.85	-8% ↓	\$8.66	\$23.34	-5% ↓	45
USFS	**	**	**	**	**	**	**	**	**
<b>Chip-N-Saw</b>	<b>\$/Ton</b>	<b>\$/Cord</b>	<b>\$/Ton</b>	<b>\$/Cord</b>	<b>Chg</b>	<b>\$/Ton</b>	<b>\$/Cord</b>	<b>Chg</b>	<b>Number</b>
Northeast TX	**	**	**	**	**	**	**	**	**
Southeast TX	\$11.77	\$31.78	\$13.67	\$36.91	-14% ↓	\$14.65	\$39.56	-20% ↓	6
Statewide	\$11.77	\$31.78	\$13.06	\$35.27	-10% ↓	\$14.76	\$39.86	-20% ↓	6
<b>HARDWOOD</b>									
<b>Mixed Sawlogs</b>	<b>\$/Ton</b>	<b>\$/MBF</b>	<b>\$/Ton</b>	<b>\$/MBF</b>	<b>Chg</b>	<b>\$/Ton</b>	<b>\$/MBF</b>	<b>Chg</b>	<b>Number</b>
Northeast TX	\$31.64	\$306.88	\$35.29	\$343.38	-10% ↓	\$40.69	\$396.07	-22% ↓	6
Southeast TX	\$32.38	\$291.43	\$42.16	\$379.48	-23% ↓	\$42.33	\$381.00	-24% ↓	5
Statewide	\$31.69	\$305.66	\$40.98	\$373.66	-23% ↓	\$41.14	\$391.67	-23% ↓	11
USFS	**	**	**	**	**	**	**	**	**
<b>Pulpwood</b>	<b>\$/Ton</b>	<b>\$/Cord</b>	<b>\$/Ton</b>	<b>\$/Cord</b>	<b>Chg</b>	<b>\$/Ton</b>	<b>\$/Cord</b>	<b>Chg</b>	<b>Number</b>
Northeast TX	\$8.31	\$23.27	\$9.38	\$26.36	-11% ↓	\$10.42	\$29.17	-20% ↓	10
Southeast TX	\$10.51	\$29.41	\$11.49	\$32.17	-9% ↓	\$12.05	\$33.74	-13% ↓	15
Statewide	\$8.88	\$24.88	\$10.46	\$29.34	-15% ↓	\$11.71	\$32.78	-24% ↓	25
USFS	**	**	**	**	**	**	**	**	**

1. Stumpage price statistics include gateway sales. Stumpage prices for gateway sales are estimated by subtracting cut-and-haul costs, other expenses, and profits provided by reporter.
2. Price is calculated from a specific conversion factor reported for each sale if available; otherwise, the average conversion factors listed on page 4 are used. MBF = Thousand Board Feet. The DOYLE LOG SCALE is used for board foot measurements.
3. Statewide data excludes U.S. Forest Service sales.
4. \*\* indicates insufficient sales to report price statistics (less than three sales).
5. Prices listed for previous periods may differ from previously published values because additional data have been received.
6. Price changes are calculated based on price in ton.
7. Extreme outliers from reported data are detected and filtered out based on statistical methods.

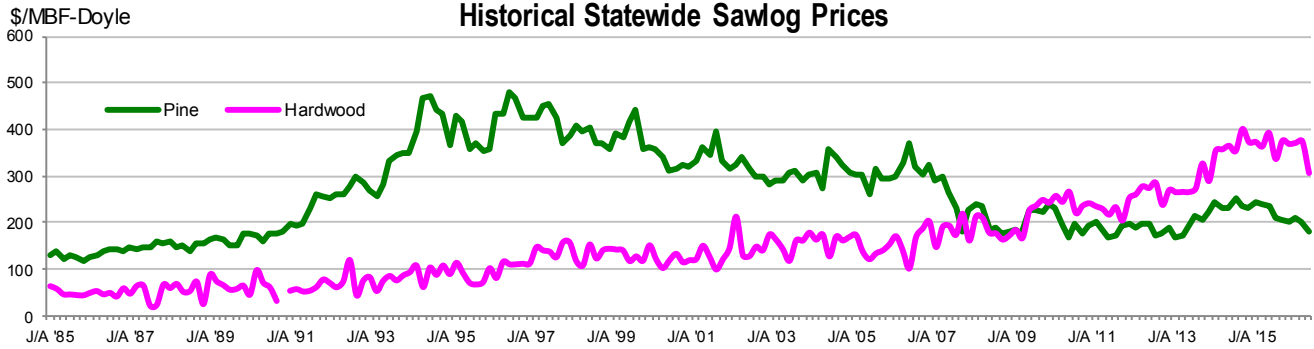
**Sawlogs**



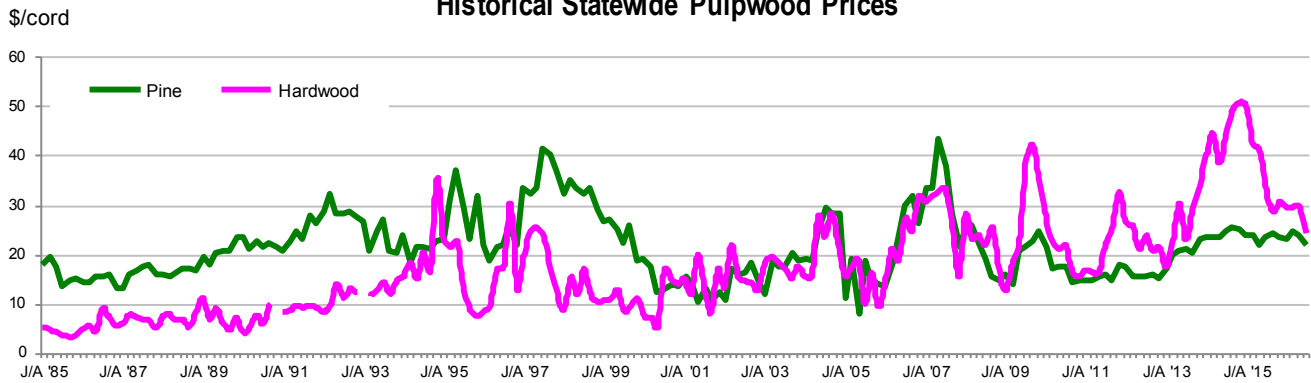
**Pulpwood**



**Historical Statewide Sawlog Prices**



**Historical Statewide Pulpwood Prices**



Note: A gap in the chart means less than 3 sales were reported and no price statistics were compiled.  
 For chart data, please go to <http://tfsweb.tamu.edu/timberpricetrends/>



*Texas Timber Price Trends* is a bi-monthly publication reporting average prices paid for standing timber in Texas.

***This report is intended only as a guide to general price levels.*** Individuals inter-

ested in buying and selling timber can use this report to monitor market trends and get a general idea of what timber is worth. However, it should not be used to judge the fair market value of a specific timber sale, which may vary considerably due to many factors.

#### **HOW ARE AVERAGE PRICES CALCULATED?**

Data published in this report are from actual timber sales as reported by as many as 60 cooperators active in the East Texas timber market. Reporters include forest product companies, logging contractors, consulting foresters, family forest landowners, financial institutions, and federal agencies.

The prices are volume weighted average prices. The price per ton for each product category is as reported or using a specific conversion factor provided by the reporters. When a specific conversion factor for each sale is not available, an average conversion factor listed here is used instead.

#### **VOLUME CONVERSION FACTORS**

##### **Sawlogs & Chip-N-Saw**

Pine— 8 tons=1 MBF-Doyle

Pine CNS— 2.7 tons= 1 Cord

Hardwood— 9 tons= 1 MBF-Doyle

##### **Pulpwood**

Pine— 2.7 tons=1 Cord

Hardwood— 2.8 tons= 1 Cord

**This publication is also available on the Texas A&M Forest Service website at:**

<http://tfsweb.tamu.edu/timberpricetrends/>

#### **WANT TO BE A REPORTER?**

If you are active in the East Texas timber market, please consider becoming a cooperating price reporter. You will receive report forms bi-monthly with a self-return envelope. In addition, you will receive a hard copy of the report in exchange for your price information.