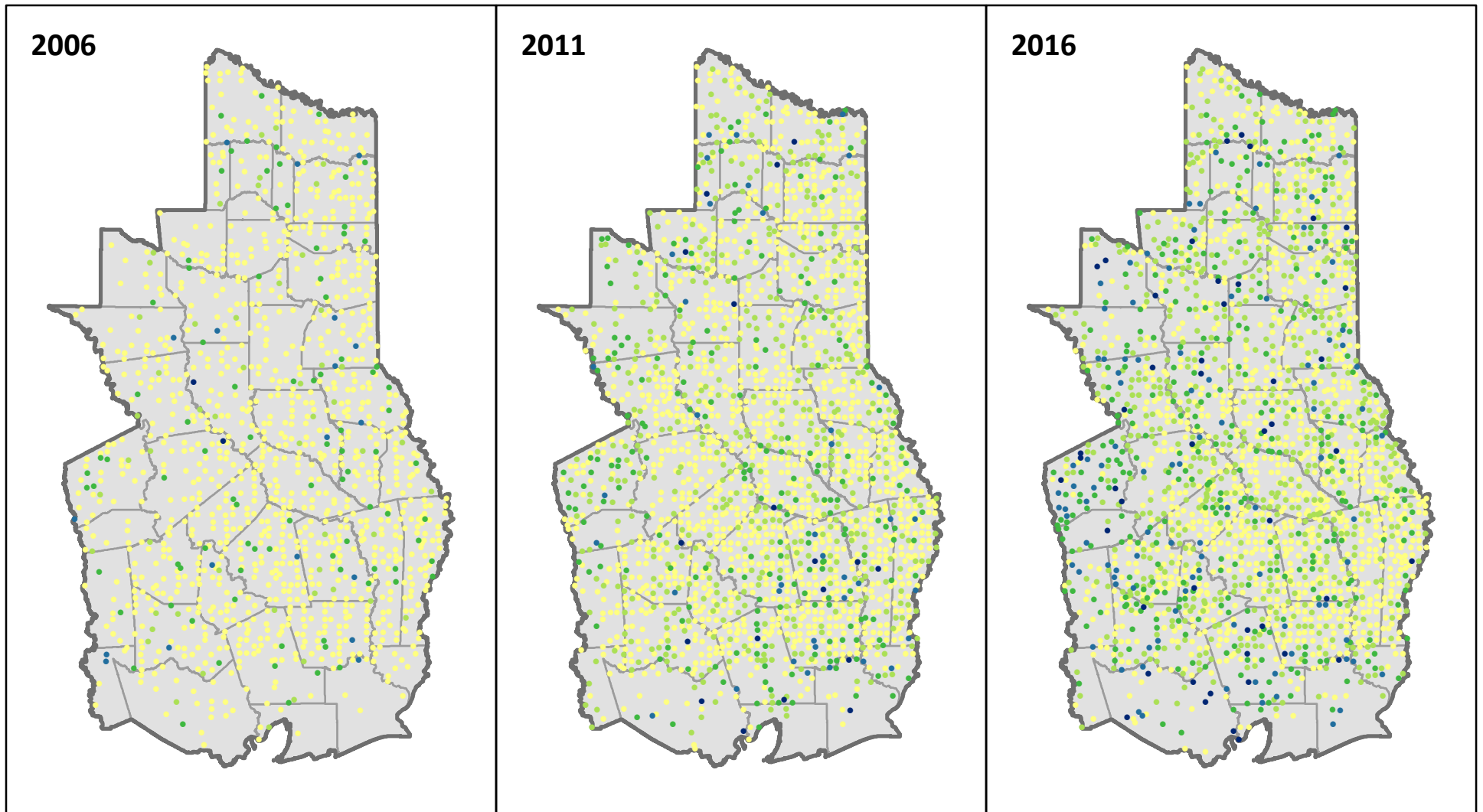


# Hardwood Mortality on All Forest Types, 2006 to 2016



FIA plots in East Texas from 2006, 2011, and 2016 inventories. Mortality is of hardwood trees at least 5 inches in diameter on all forest types, expressed in number of trees per acre.

Data downloaded from FIA DataMart (<http://www.fia.fs.fed.us/tools-data>)



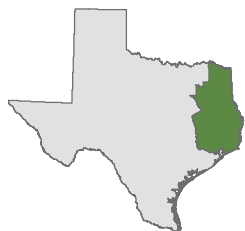
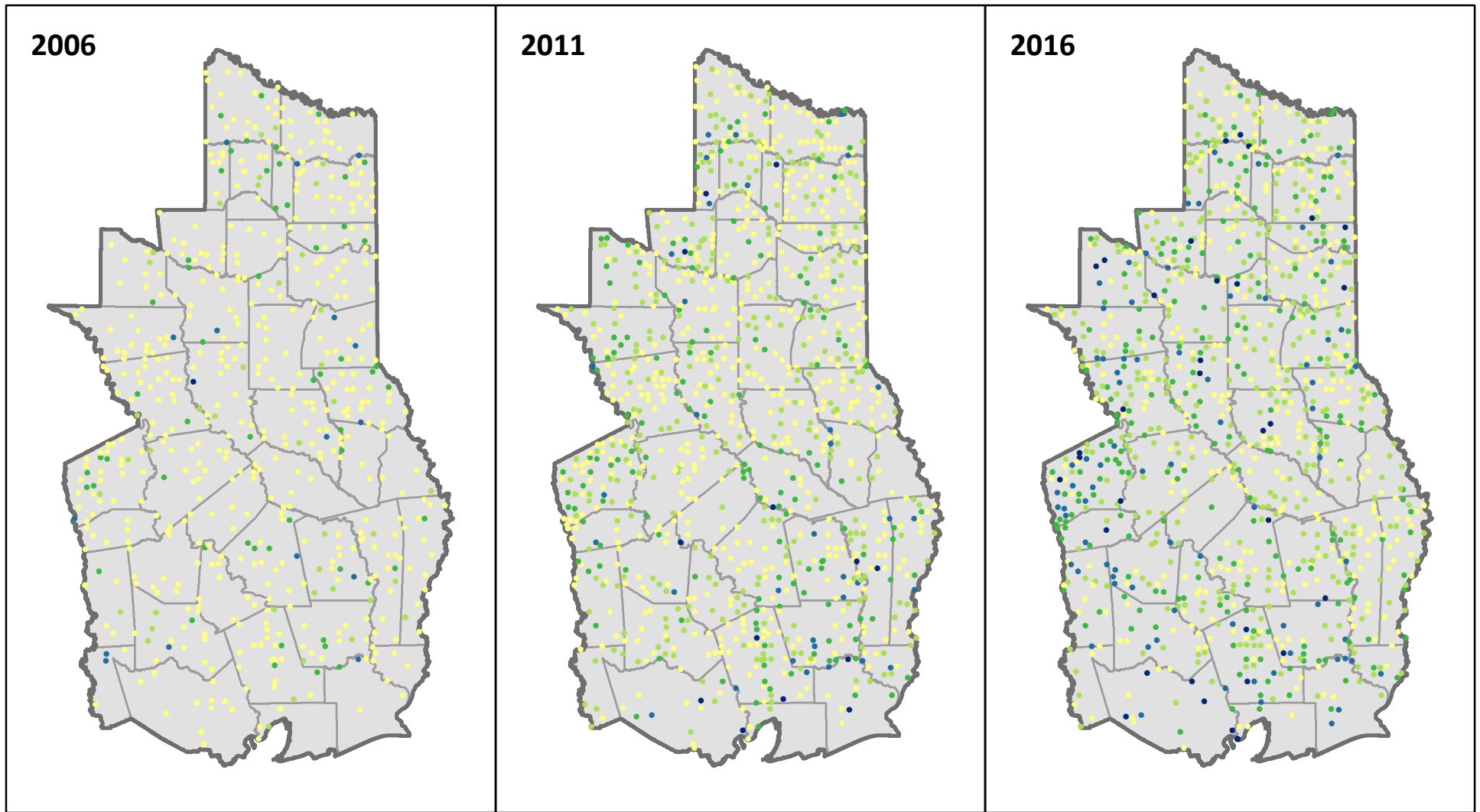
Forest Inventory & Analysis <http://www.fia.fs.fed.us>

Map prepared by Rebekah Zehnder, Texas A&M Forest Service ([rzhender@tfs.tamu.edu](mailto:rzhender@tfs.tamu.edu))



**TEXAS A&M**  
FOREST SERVICE

# Hardwood Mortality on Hardwood Forest Types, 2006 to 2016



FIA plots in East Texas from 2006, 2011, and 2016 inventories. Mortality is of hardwood trees at least 5 inches in diameter on hardwood forest types, expressed in number of trees per acre.

Data downloaded from FIA DataMart (<http://www.fia.fs.fed.us/tools-data>)



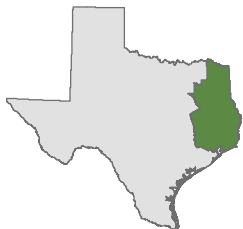
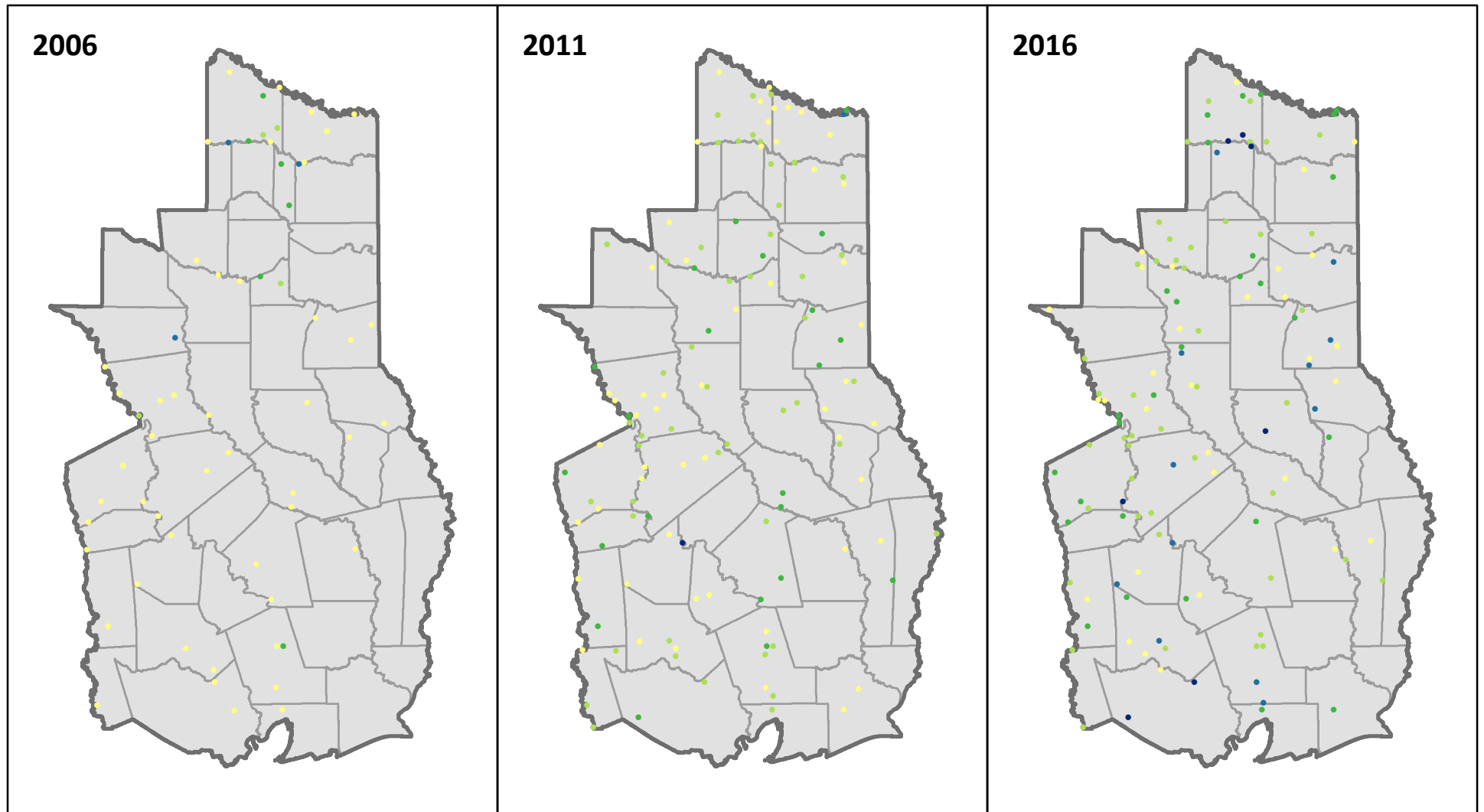
Forest Inventory & Analysis <http://www.fia.fs.fed.us>

Map prepared by Rebekah Zehnder, Texas A&M Forest Service ([rzehnder@tfs.tamu.edu](mailto:rzehnder@tfs.tamu.edu))



**TEXAS A&M**  
FOREST SERVICE

# Hardwood Mortality on Elm-Ash-Cottonwood Forest, 2006 to 2016



FIA plots in East Texas from 2006, 2011, and 2016 inventories. Mortality is of hardwood trees at least 5 inches in diameter on elm-ash-cottonwood forest, expressed in number of trees per acre.

Data downloaded from FIA DataMart (<http://www.fia.fs.fed.us/tools-data>)



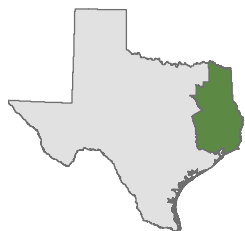
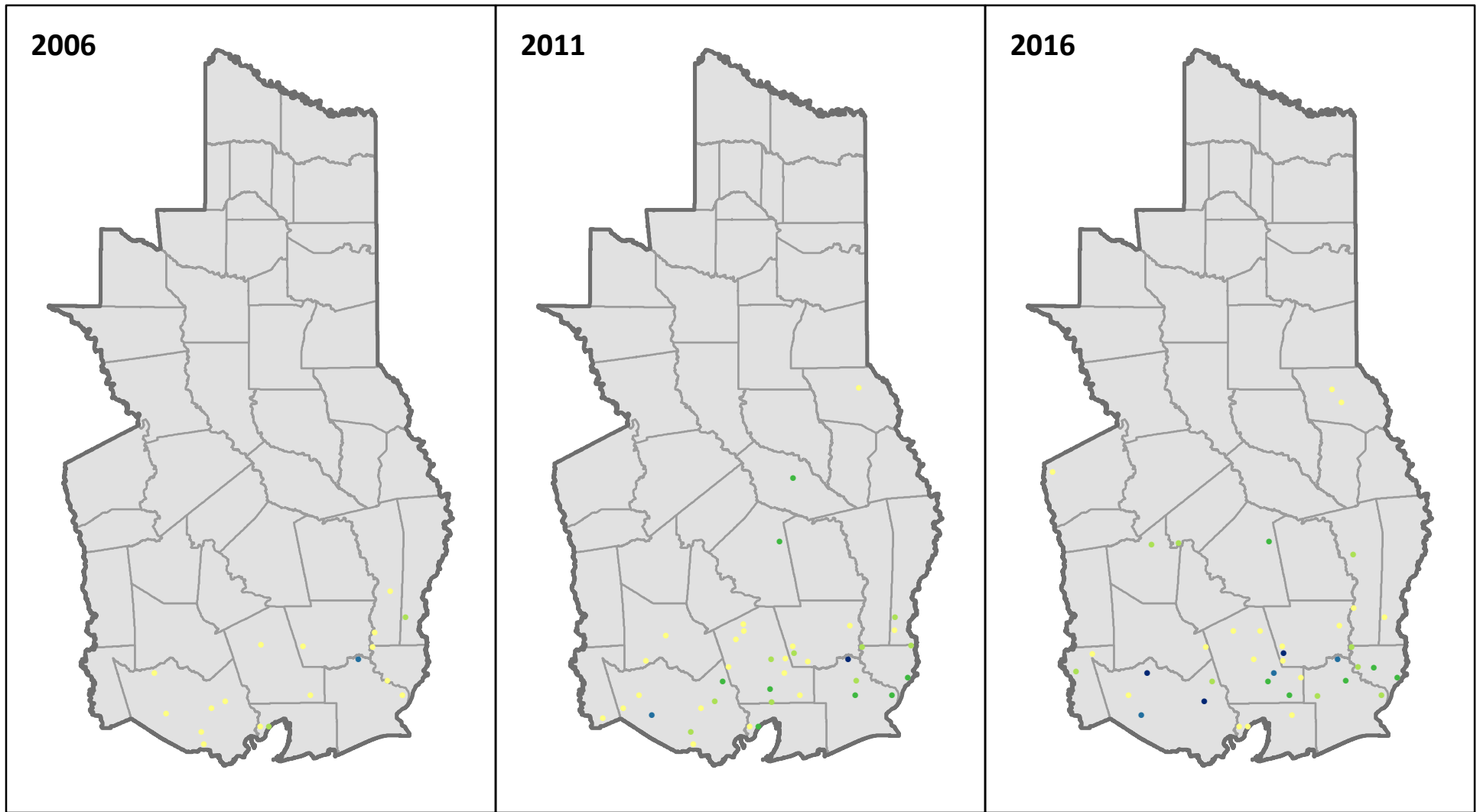
Forest Inventory & Analysis <http://www.fia.fs.fed.us>

Map prepared by Rebekah Zehnder, Texas A&M Forest Service ([rzhender@tfs.tamu.edu](mailto:rzhender@tfs.tamu.edu))



**TEXAS A&M**  
FOREST SERVICE

# Hardwood Mortality on Exotic Hardwood Forest, 2006 to 2016



FIA plots in East Texas from 2006, 2011, and 2016 inventories. Mortality is of hardwood trees at least 5 inches in diameter on exotic hardwood forest, expressed in number of trees per acre.

Data downloaded from FIA DataMart (<http://www.fia.fs.fed.us/tools-data>)



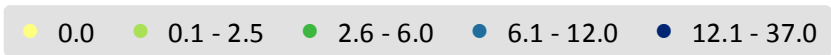
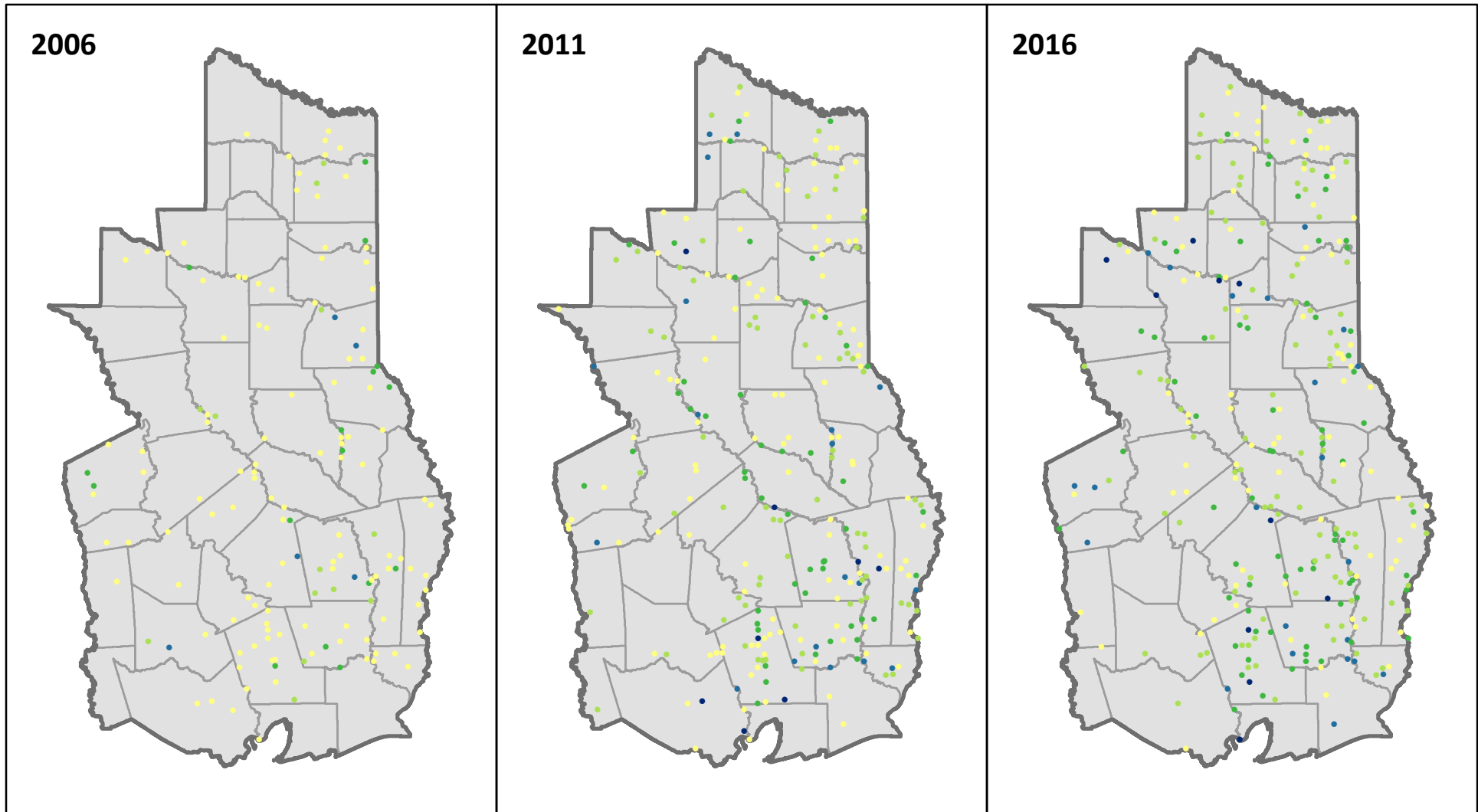
Forest Inventory & Analysis <http://www.fia.fs.fed.us>

Map prepared by Rebekah Zehnder, Texas A&M Forest Service (rzhender@tfs.tamu.edu)



**TEXAS A&M**  
FOREST SERVICE

# Hardwood Mortality on Oak-Gum-Cypress Forest, 2006 to 2016



FIA plots in East Texas from 2006, 2011, and 2016 inventories. Mortality is of hardwood trees at least 5 inches in diameter on oak-gum-cypress forest, expressed in number of trees per acre.

Data downloaded from FIA DataMart (<http://www.fia.fs.fed.us/tools-data>)



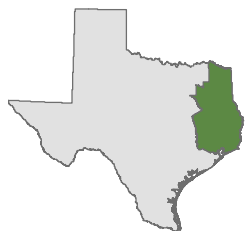
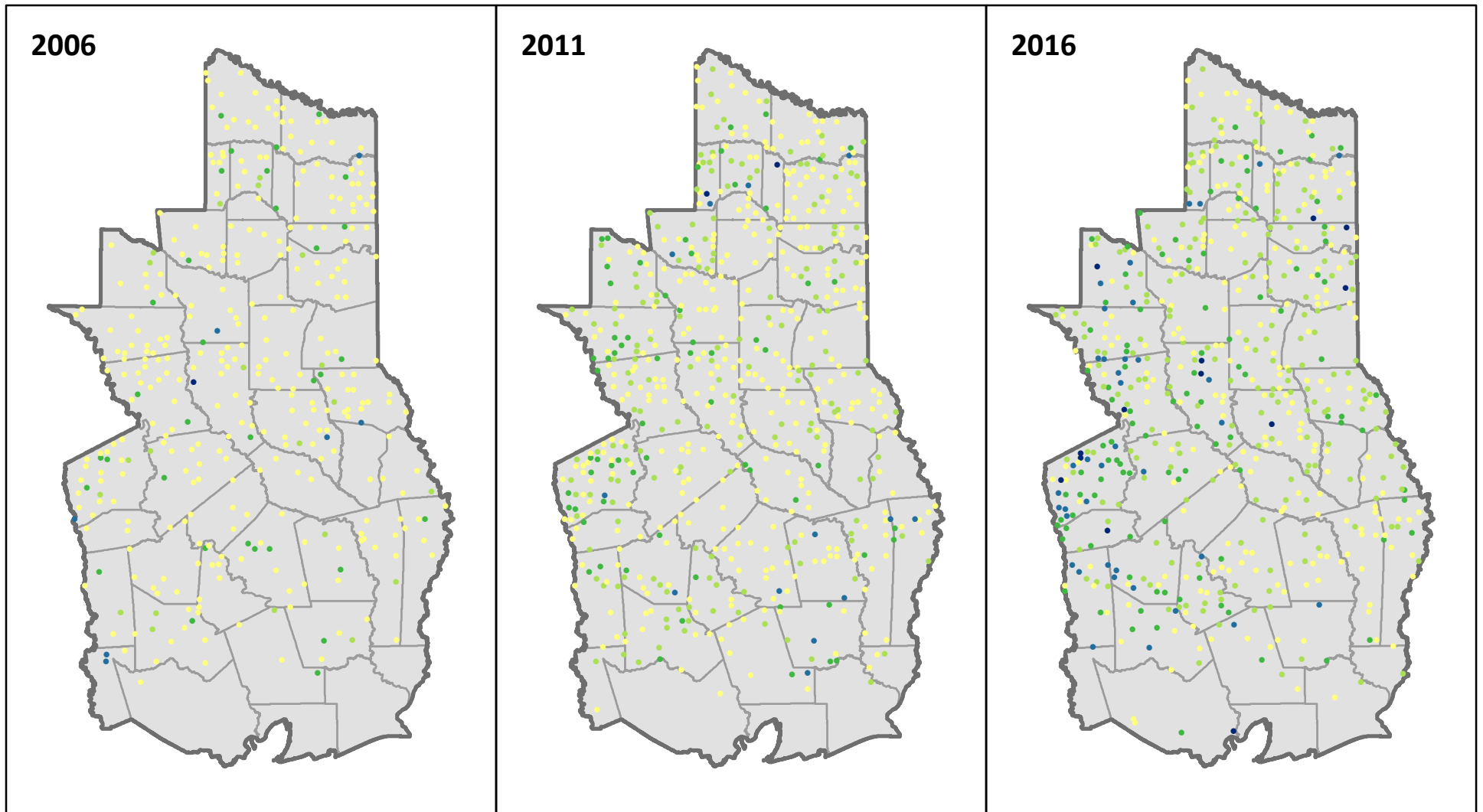
Forest Inventory & Analysis <http://www.fia.fs.fed.us>

Map prepared by Rebekah Zehnder, Texas A&M Forest Service ([rzhender@tfs.tamu.edu](mailto:rzhender@tfs.tamu.edu))



**TEXAS A&M**  
FOREST SERVICE

# Hardwood Mortality on Oak-Hickory Forest, 2006 to 2016



FIA plots in East Texas from 2006, 2011, and 2016 inventories. Mortality is of hardwood trees at least 5 inches in diameter on oak-hickory forest, expressed in number of trees per acre.

Data downloaded from FIA DataMart (<http://www.fia.fs.fed.us/tools-data>)



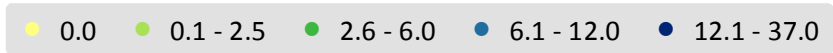
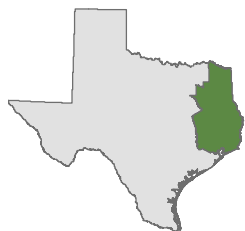
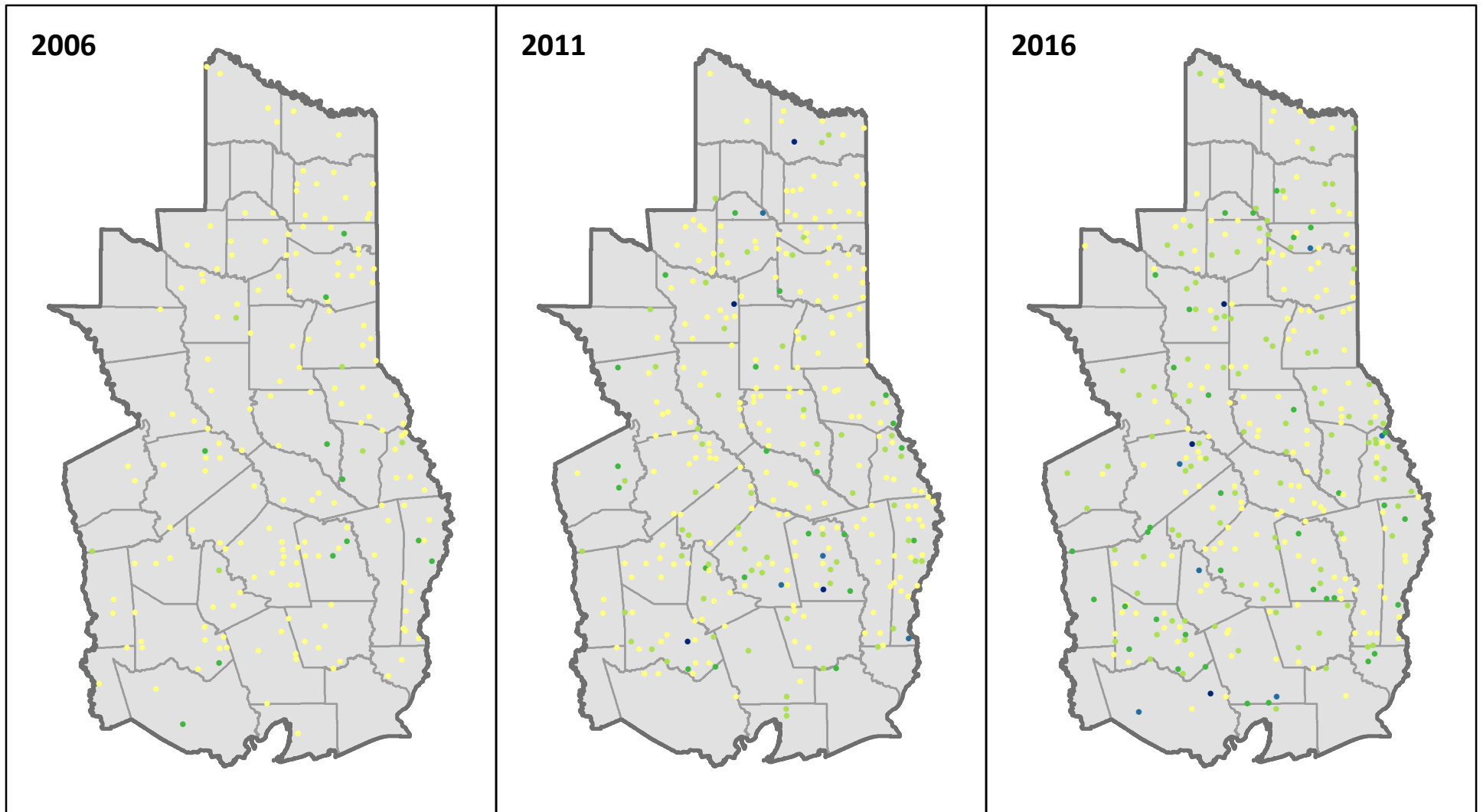
Forest Inventory & Analysis <http://www.fia.fs.fed.us>

Map prepared by Rebekah Zehnder, Texas A&M Forest Service ([rzhender@tfs.tamu.edu](mailto:rzhender@tfs.tamu.edu))



**TEXAS A&M**  
FOREST SERVICE

# Hardwood Mortality on Oak-Pine Forest, 2006 to 2016



FIA plots in East Texas from 2006, 2011, and 2016 inventories. Mortality is of hardwood trees at least 5 inches in diameter on oak-pine forest, expressed in number of trees per acre.

Data downloaded from FIA DataMart (<http://www.fia.fs.fed.us/tools-data>)



Forest Inventory & Analysis <http://www.fia.fs.fed.us>

Map prepared by Rebekah Zehnder, Texas A&M Forest Service ([rzehnder@tfs.tamu.edu](mailto:rzehnder@tfs.tamu.edu))



**TEXAS A&M**  
FOREST SERVICE