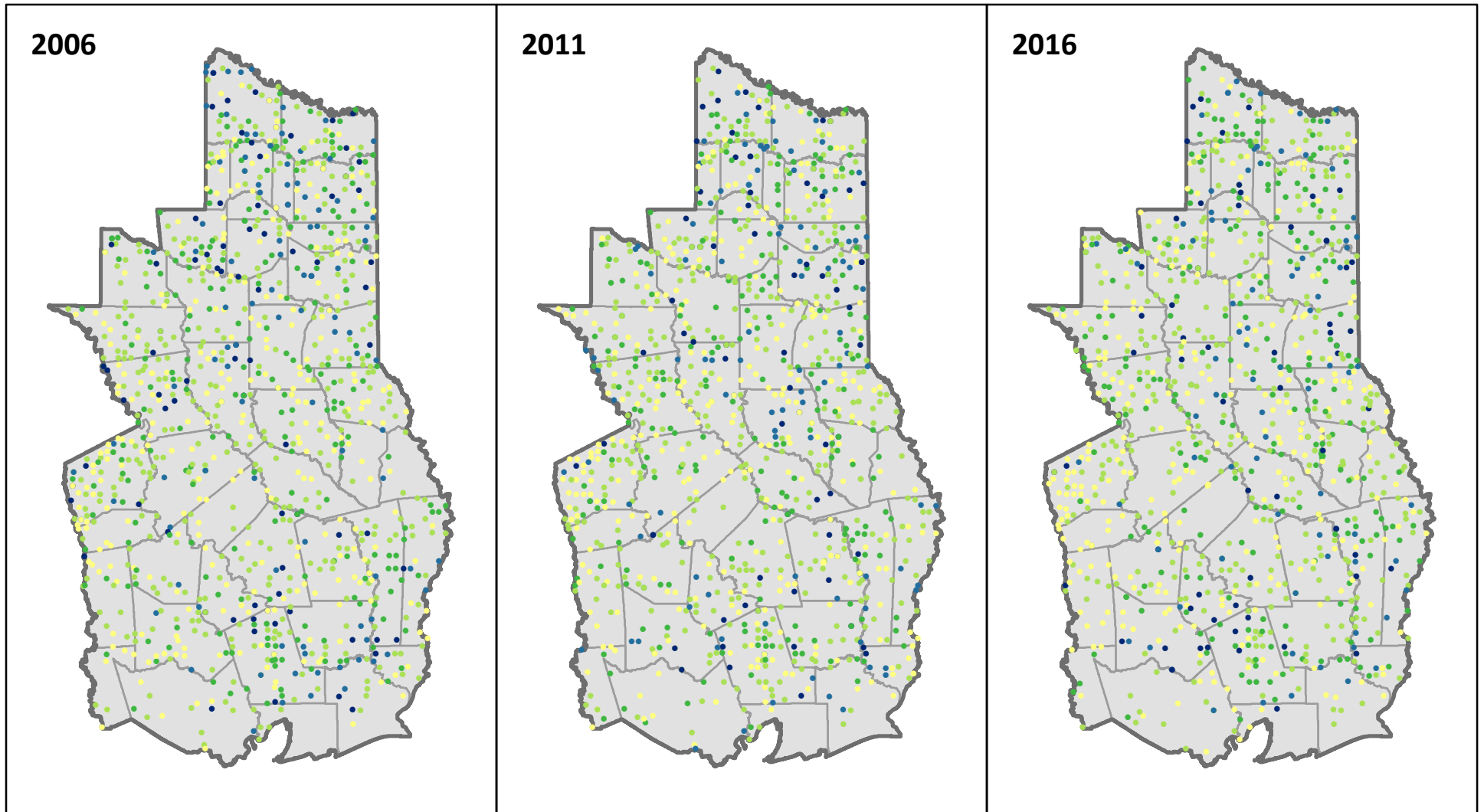


All Live Stocking on Hardwood Forest Types, 2006 to 2016



FIA plots in East Texas from 2006, 2011, and 2016 inventories. Stocking is percent stocking of all live trees at least 5 inches in diameter on hardwood forest types. If more than one hardwood forest type occurred on a plot, the one with the most area is shown.

Data downloaded from FIA DataMart (<http://www.fia.fs.fed.us/tools-data>)



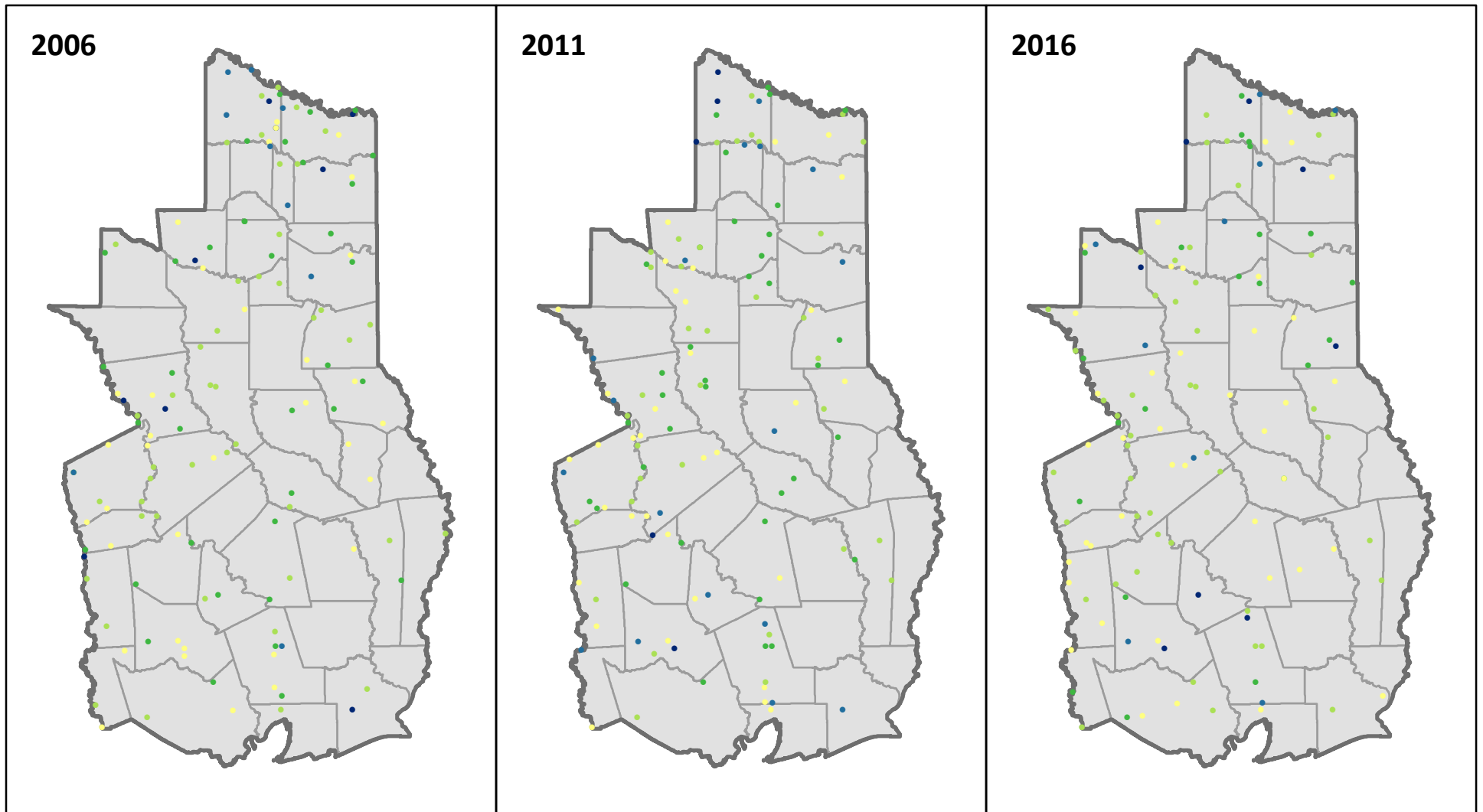
Forest Inventory & Analysis <http://www.fia.fs.fed.us>

Map prepared by Rebekah Zehnder, Texas A&M Forest Service (rzhender@tfs.tamu.edu)



TEXAS A&M
FOREST SERVICE

All Live Stocking on Elm-Ash-Cottonwood Forest, 2006 to 2016



● 0 - 40 ● 41 - 60 ● 61 - 80 ● 81 - 100 ● 101 - 120

FIA plots in East Texas from 2006, 2011, and 2016 inventories. Stocking is percent stocking of all live trees at least 5 inches in diameter on elm-ash-cottonwood forest type group. If multiple types occurred on a plot, the one with the most area is shown.

Data downloaded from FIA DataMart (<http://www.fia.fs.fed.us/tools-data>)



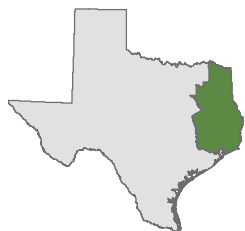
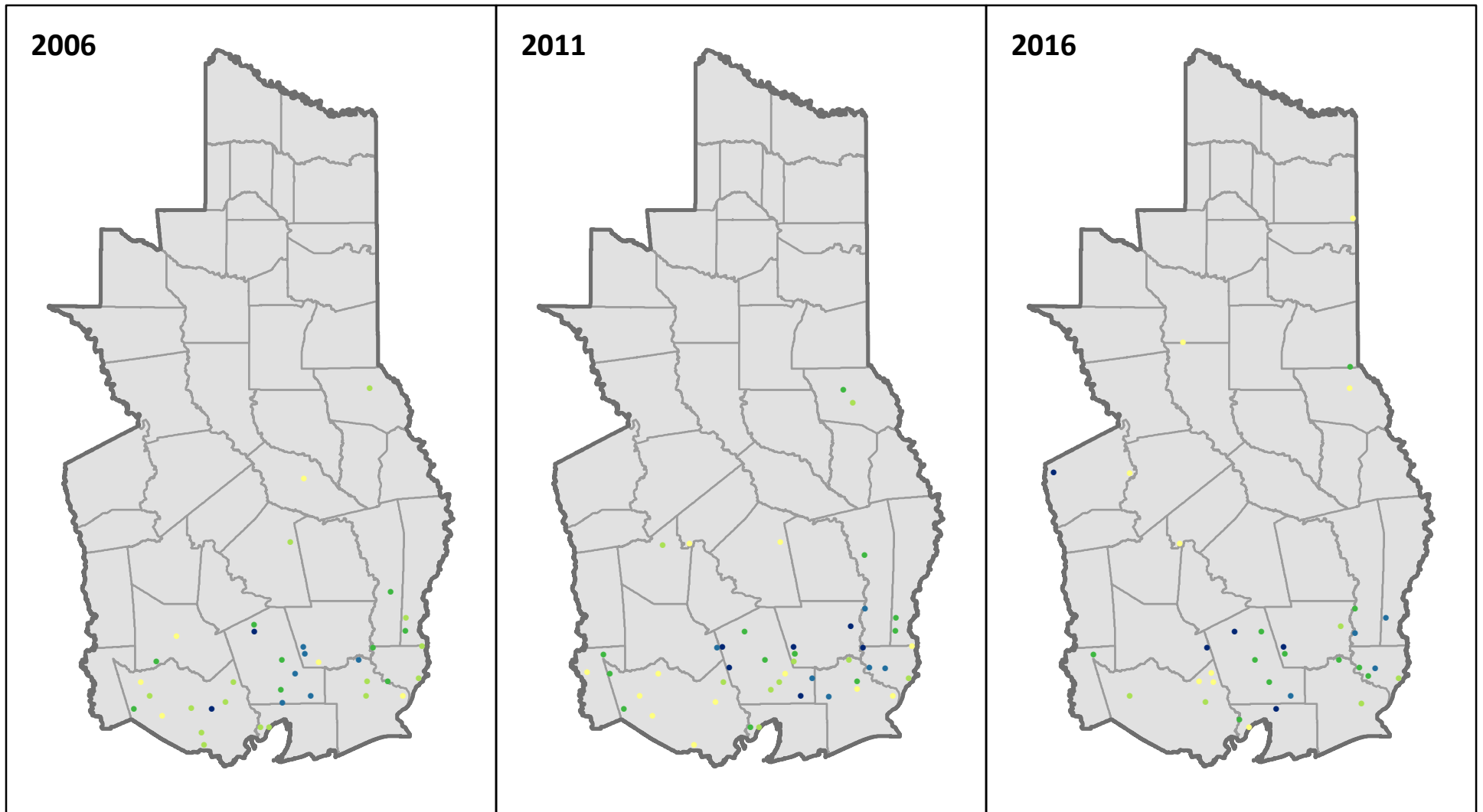
Forest Inventory & Analysis <http://www.fia.fs.fed.us>

Map prepared by Rebekah Zehnder, Texas A&M Forest Service (rzhender@tfs.tamu.edu)



TEXAS A&M
FOREST SERVICE

All Live Stocking on Exotic Hardwood Forest, 2006 to 2016



● 0 - 40 ● 41 - 60 ● 61 - 80 ● 81 - 100 ● 101 - 120

FIA plots in East Texas from 2006, 2011, and 2016 inventories. Stocking is percent stocking of all live trees at least 5 inches in diameter on exotic hardwood forest type group. If multiple types occurred on a plot, the one with the most area is shown.

Data downloaded from FIA DataMart (<http://www.fia.fs.fed.us/tools-data>)



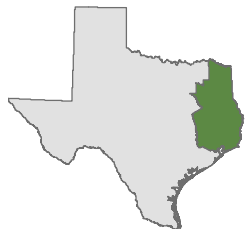
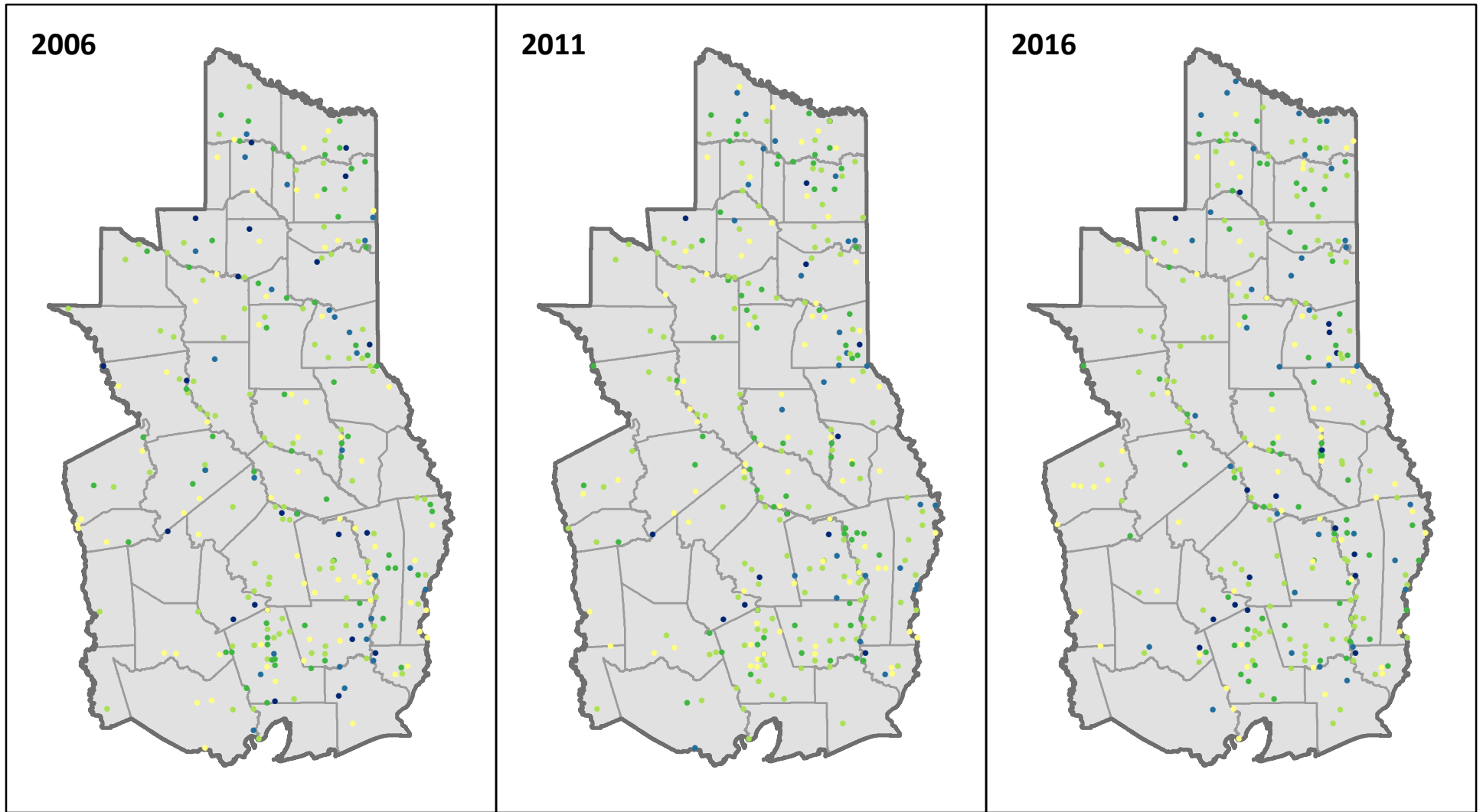
Forest Inventory & Analysis <http://www.fia.fs.fed.us>

Map prepared by Rebekah Zehnder, Texas A&M Forest Service (rzhender@tfs.tamu.edu)



TEXAS A&M
FOREST SERVICE

All Live Stocking on Oak-Gum-Cypress Forest, 2006 to 2016



FIA plots in East Texas from 2006, 2011, and 2016 inventories. Stocking is percent stocking of all live trees at least 5 inches in diameter on oak-gum-cypress forest type group. If multiple types occurred on a plot, the one with the most area is shown.

Data downloaded from FIA DataMart (<http://www.fia.fs.fed.us/tools-data>)



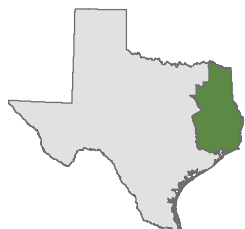
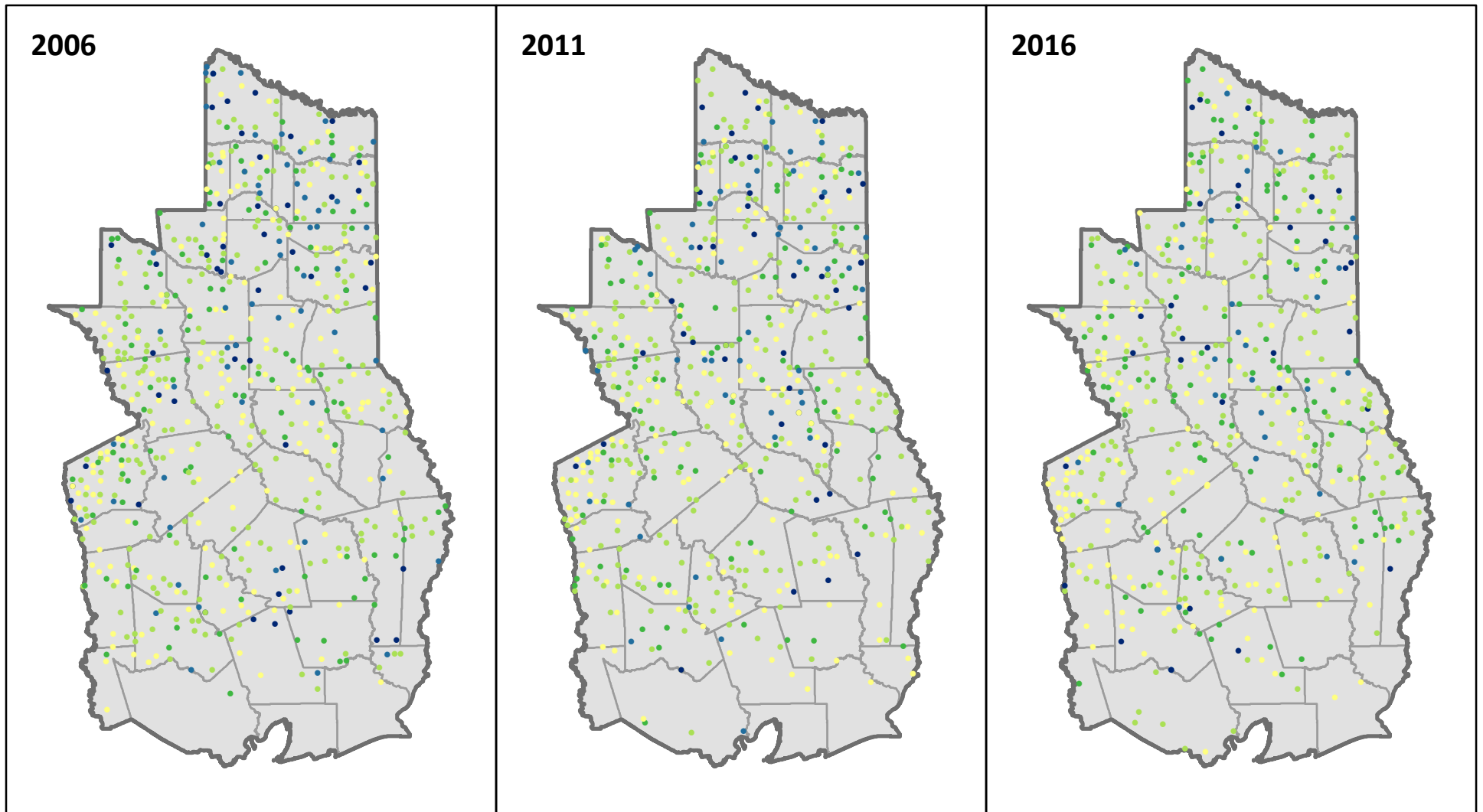
Forest Inventory & Analysis <http://www.fia.fs.fed.us>

Map prepared by Rebekah Zehnder, Texas A&M Forest Service (rzhender@tfs.tamu.edu)



TEXAS A&M
FOREST SERVICE

All Live Stocking on Oak-Hickory Forest, 2006 to 2016



● 0 - 40 ● 41 - 60 ● 61 - 80 ● 81 - 100 ● 101 - 120

FIA plots in East Texas from 2006, 2011, and 2016 inventories. Stocking is percent stocking of all live trees at least 5 inches in diameter on oak-hickory forest type group. If multiple types occurred on a plot, the one with the most area is shown.

Data downloaded from FIA DataMart (<http://www.fia.fs.fed.us/tools-data>)



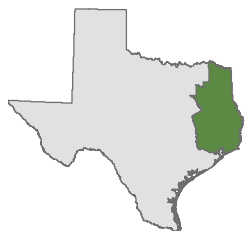
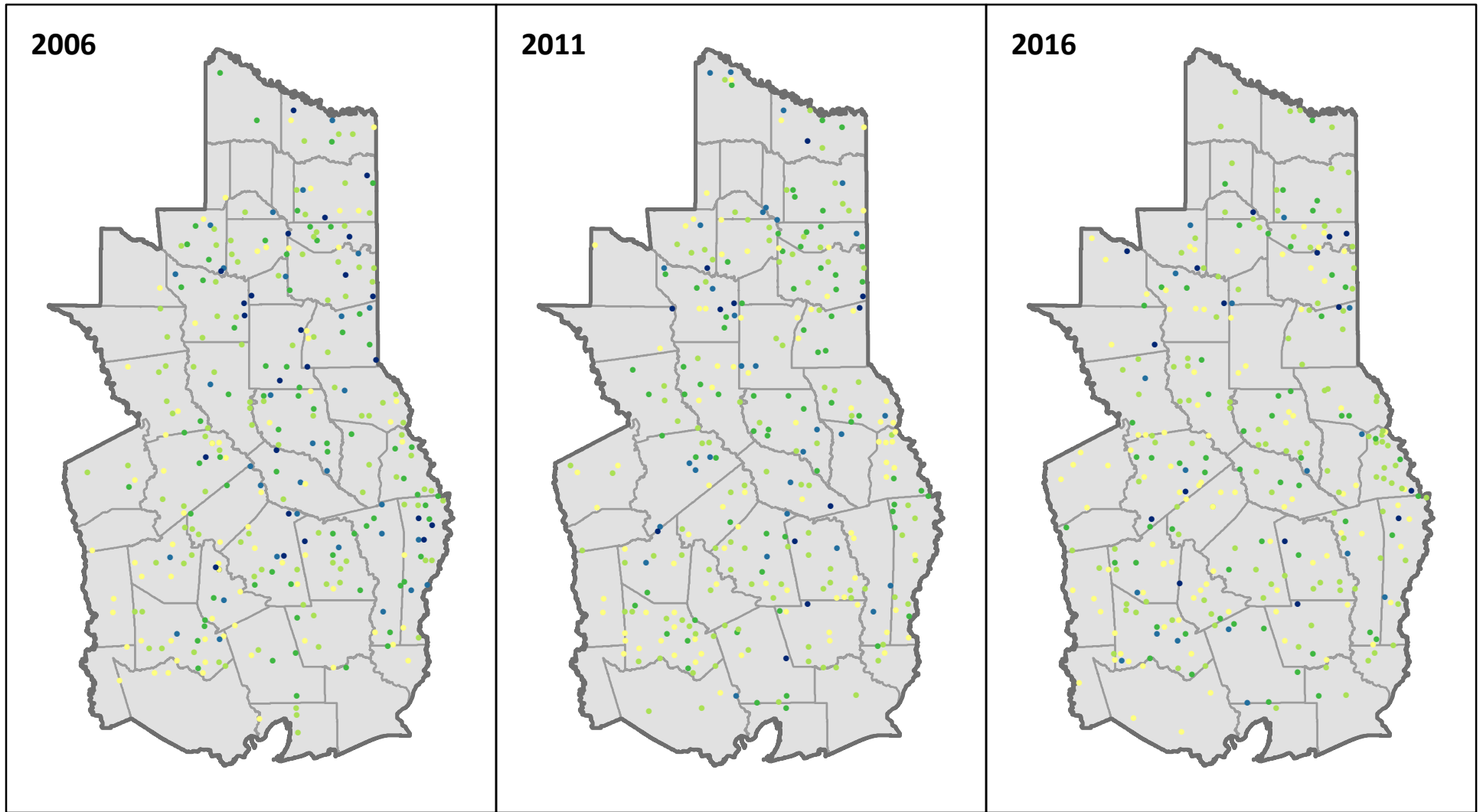
Forest Inventory & Analysis <http://www.fia.fs.fed.us>

Map prepared by Rebekah Zehnder, Texas A&M Forest Service (rzhender@tfs.tamu.edu)



TEXAS A&M
FOREST SERVICE

All Live Stocking on Oak-Pine Forest, 2006 to 2016



● 0 - 40
 ● 41 - 60
 ● 61 - 80
 ● 81 - 100
 ● 101 - 120

FIA plots in East Texas from 2006, 2011, and 2016 inventories. Stocking is percent stocking of all live trees at least 5 inches in diameter on oak-pine forest type group. If multiple types occurred on a plot, the one with the most area is shown.

Data downloaded from FIA DataMart (<http://www.fia.fs.fed.us/tools-data>)



Forest Inventory & Analysis <http://www.fia.fs.fed.us>

Map prepared by Rebekah Zehnder, Texas A&M Forest Service (rzehnder@tfs.tamu.edu)



TEXAS A&M
FOREST SERVICE